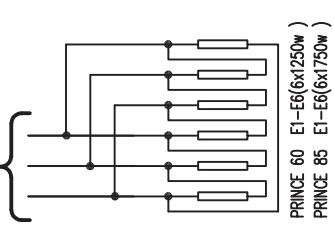


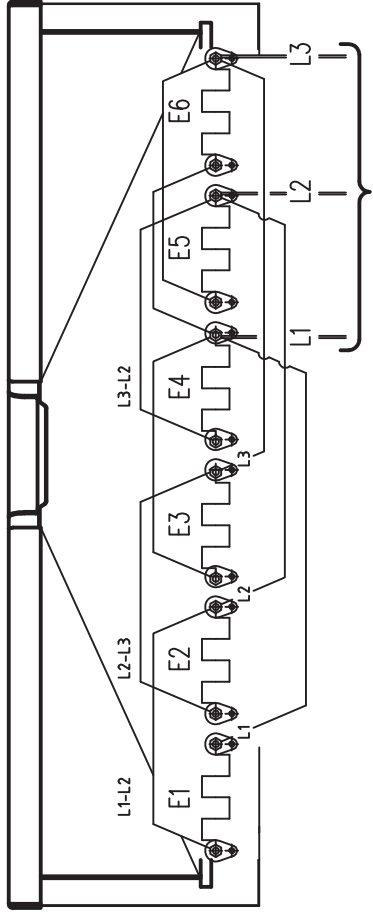
3/PE 220-230V 50Hz
K1/1-K1/5



PRINCE 60 E1-E6(6x1250w)
PRINCE 85 E1-E6(6x1750w)

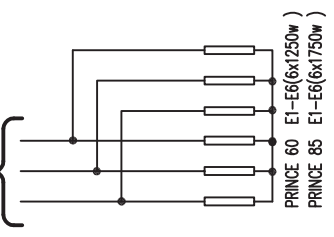
CONNECTION DIAGRAM FOR HEATING ELEMENTS
VASTUUSIEN KYTKENTÄOHJE ERI JÄNNITEJÄRJESTELMILLÄ

3/PE 220-230V 50Hz



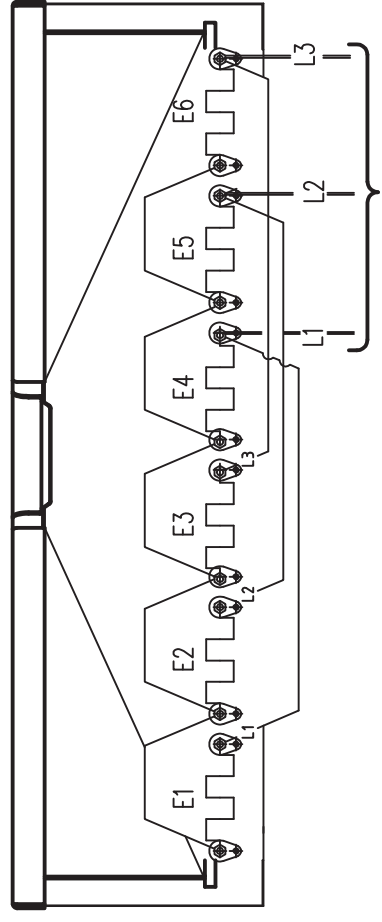
K1/1-K1/5

3/N/PE 380-415V 50Hz
3/PE 380-415V 50Hz
K1/1-K1/5



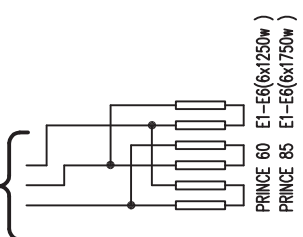
PRINCE 60 E1-E6(6x1250w)
PRINCE 85 E1-E6(6x1750w)

3/N/PE 380-415V 50Hz
3/PE 380-415V 50Hz



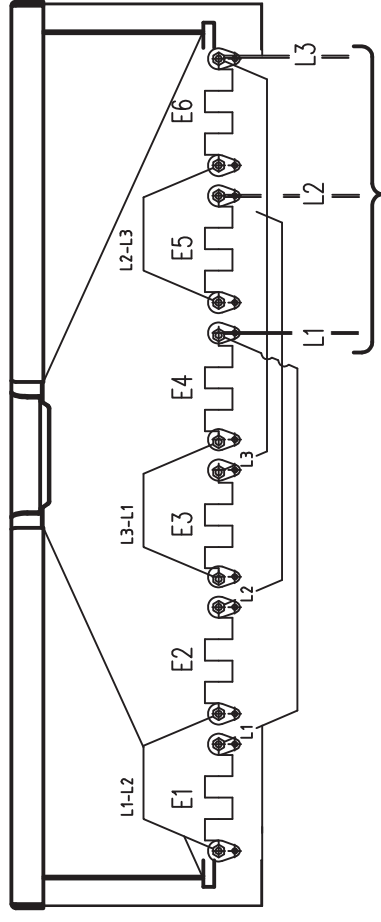
K1/1-K1/5

3/PE 440V 60Hz
K1/1-K1/5

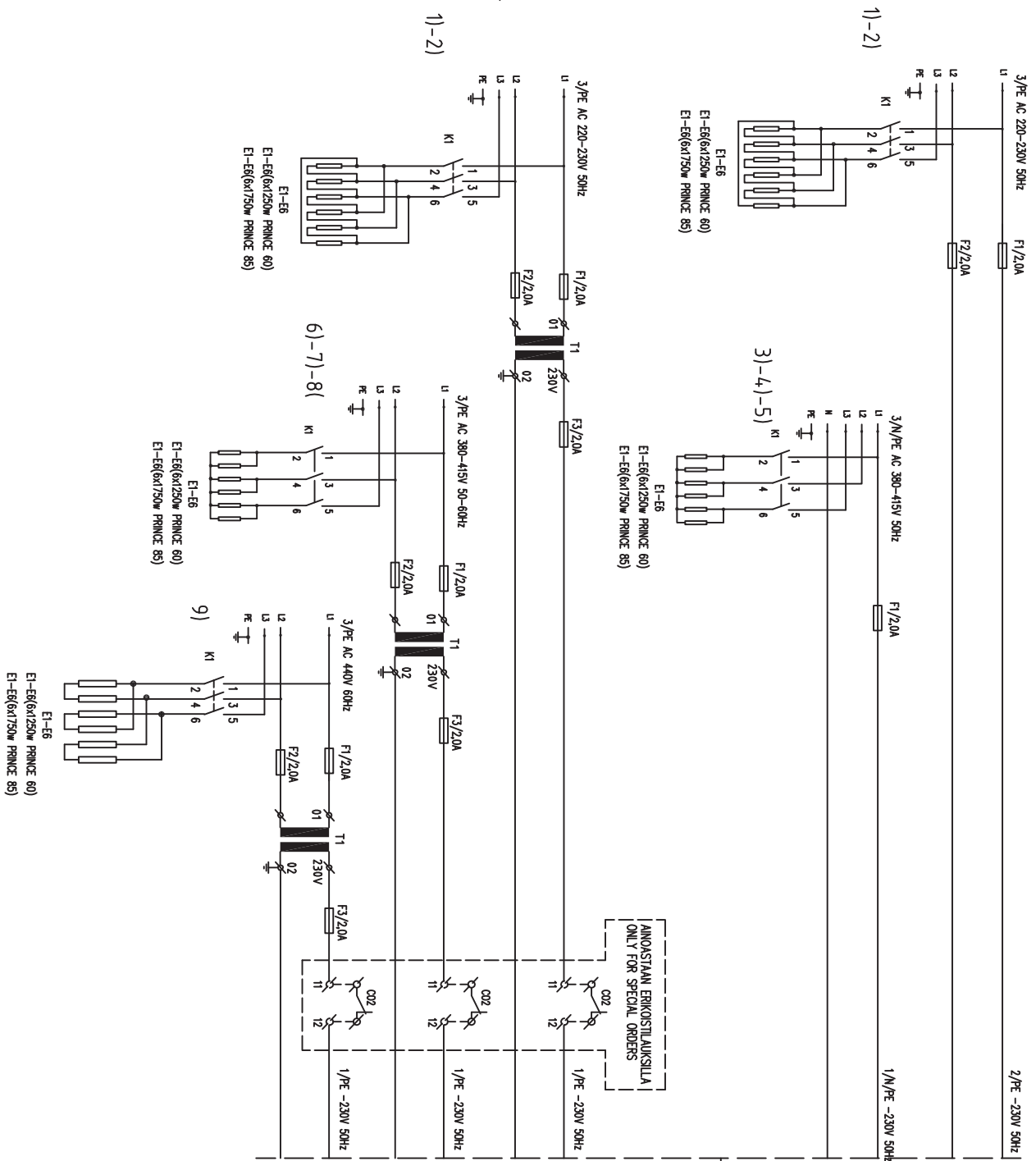


PRINCE 60 E1-E6(6x1250w)
PRINCE 85 E1-E6(6x1750w)

3/PE 440V 50-60Hz



K1/1-K1/5



LIITÄNTÄYTÖS/CONNECTION INFORMATION
 Yrjö- ja teholliset uunit ja ryhmille
 Supply current- and power

KAAVIO DIAGRAM N:o	VERKKO / ELECTRIC SUPPLY	PRINCE 60		PRINCE 85	
		P /kW	I/A	P /kW	I/A
1	3/PE AC 220V 50-60Hz	6,9	18,0	9,6	25,2
2	3/PE AC 230V 50-60Hz	7,5	18,8	10,5	26,3
3	3/N/PE AC 380V 50Hz	6,9	10,4	9,6	14,6
4	3/N/PE AC 400V 50Hz	7,5	10,9	10,5	15,2
5	3/N/PE AC 415V 50Hz	8,2	11,3	11,5	15,9
6	3/PE AC 380V 50Hz	6,9	10,4	9,6	14,6
7	3/PE AC 400V 50Hz	7,5	10,9	10,5	15,2
8	3/PE AC 415V 50Hz	8,2	11,3	11,4	15,9
9	3/PE AC 440V 60Hz	6,9	9,0	9,6	12,6

-HACKMAN-
METOS

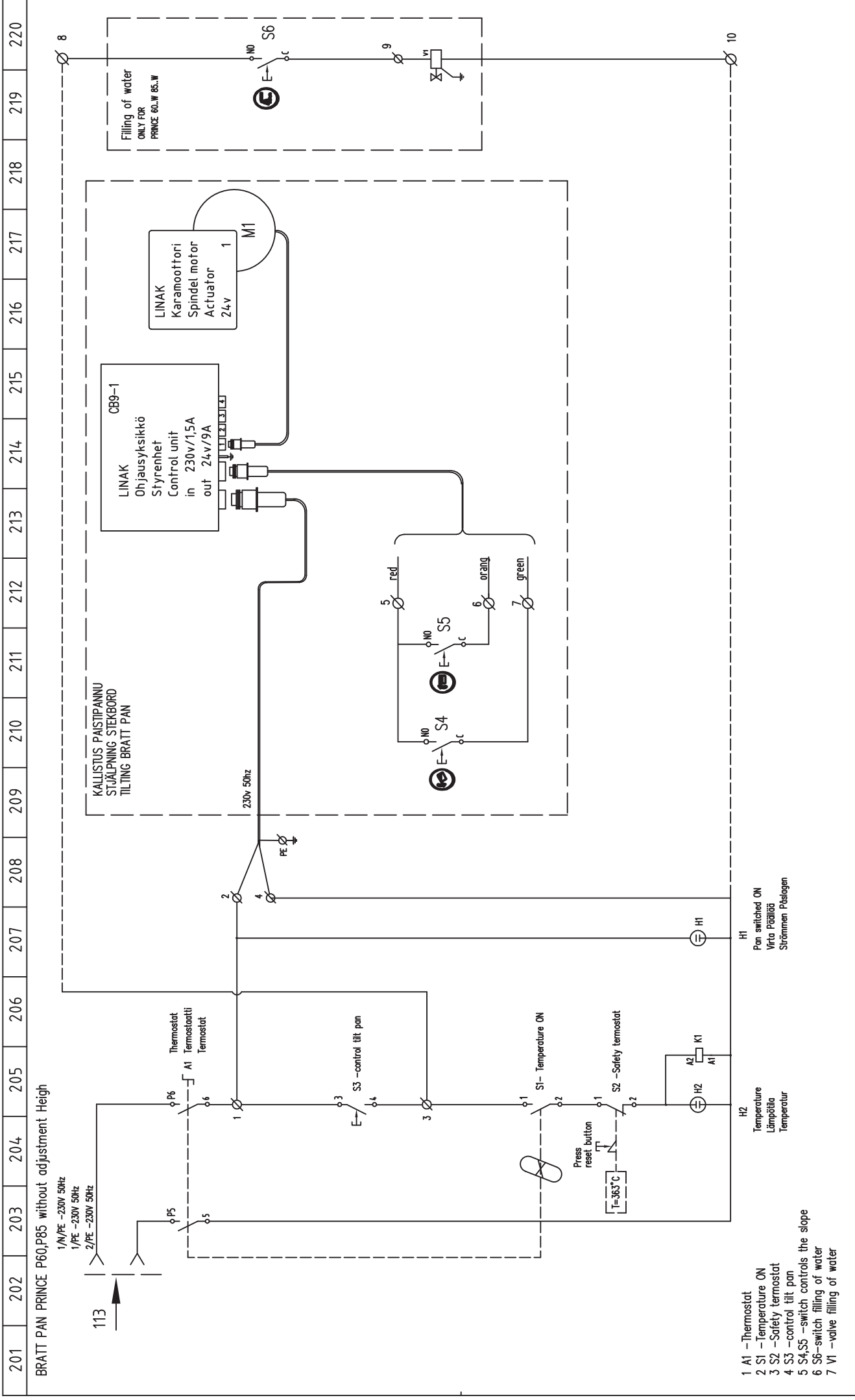
Tuote	0122011A.0
Yksikö	
Yksikö	
Yksikö	
Yksikö	

PAISTINPANNU PRINCE 60,60H,85,85H
 BRATT PAN PRINCE 60,60H,85,85H
 STEKBORD PRINCE 60,60H,85,85H

Kytentäkaavio
 Connection diagram
 Koppilingschema

3/PE AC 220-230V 50Hz
 3/N/PE AC 380-415V 50Hz
 3/PE AC 380-440V 50-60Hz

Yksikö	T02711A3	Lait	3/1
Yksikö	T02711A3	Sheet	
Yksikö		Rev	



BRATT PAN PRINCE P60,P85 without adjustment Heigh
 1/N/PE -230V 50Hz
 1/PE -230V 50Hz
 2/PE -230V 50Hz

113

Thermostat
 A1 Termostaatti
 Termostat

S3 -control tilt pan

S1- Temperature ON

Press reset button
 T=36.3°C

S2 -Safety thermostat

H2
 Temperature
 Lämpötila
 Temperatur

H1
 Pan switched ON
 Virro Pääliigi
 Strömmen Påslagen

1
 LINAK
 Ohjausyksikkö
 Control unit
 in 230v/15A
 out 24v/9A

1
 LINAK
 Karamoottori
 Spindel motor
 Actuator
 24v

5 red
 6 orange
 7 green

S4
 S5

230v 50Hz

PE

8

Filling of water
 ONLY FOR
 PRINCE 60..W 85..W

S6
 V1

9

10

KALLISTUS PAISTIPANNU
 STJÄLPNING STEKBOARD
 TILTING BRATT PAN

201 202 203 204 205 206 207 208 209 210 211 212 213 214 215 216 217 218 219 220 220

- 1 A1 -Thermostat
- 2 S1 -Temperature ON
- 3 S2 -Safety thermostat
- 4 S3 -control tilt pan
- 5 S4,S5 -switch controls the slope
- 6 S6-switch filling of water
- 7 V1 -valve filling of water

<p style="text-align: center;">-HACKMAN- METOS</p>		<p>Tek. DESINE 07.12.2011/A.O</p> <p>Tek. CHRD</p> <p>Tyyp. DES</p>	<p>Kytentäkaavio Connection diagram Kopplingschema</p>	<p>3/PE AC 220-230V 50Hz 3/N/PE AC 380-415V 50Hz 3/PE AC 380-440V 50-60Hz</p>	<p>Typ. des PROJEK Tiedote FILE Pilt. des DES BR</p>	<p>T02711A3 T02711A3</p>	<p>LAMN SHEET 3/2</p>	<p>REV</p>
---	--	---	--	---	---	---------------------------------------	---	------------